

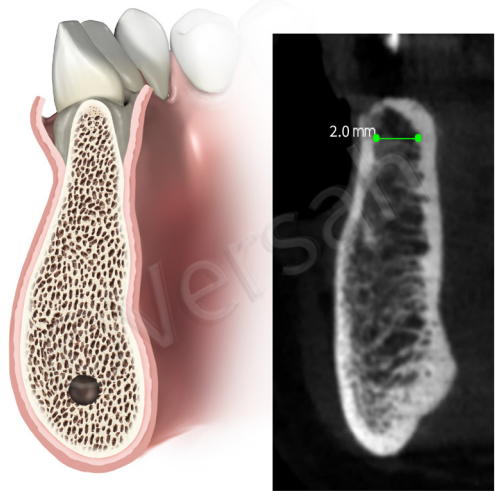
# Osseodensification

Facilitated Ridge Expansion Protocol\*

Protocol 1 of 6

**Overview:** Osseodensification will not create the tissue, it may only optimize and preserve what already exists. There is a need for  $\geq 2$  mm of trabecular-bone core and  $\geq 1/1$  trabecular/cortical bone ratio to achieve a predictable plastic expansion. The more cortical bone there is, the more trabecular core is needed to facilitate predictable expansion. The ideal minimum ridge to expand is 4 mm (2 mm trabecular core + 1mm cortex on each side). This protocol is indicated to expand a ridge with a narrow crest and wider base. It is not indicated in resorbed ridge with a narrow base.

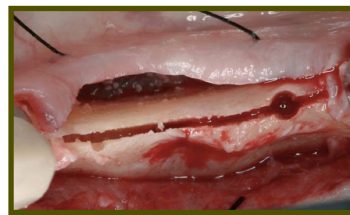
- DIAGNOSE AND ASSESS THE AMOUNT OF THE TRABECULAR BONE USING A CBCT
- CREATE INTRA-BONY TROUGH IN NARROW RIDGE  $< 4$  MM
- NO NEED FOR VERTICAL SIDE CUTS
- USE DENSAH® BURS IN SMALL INCREMENTS
- OVER-SIZE THE OSTEOTOMY TO BE  $\geq$  IMPLANT MAJOR DIAMETER
- OSTEOTOMY 1 MM DEEPER THAN IMPLANT LENGTH ESPECIALLY IN THE MANDIBLE
- PERFORM HARD & SOFT TISSUE VENEER CONTOUR GRAFT TO DEVELOP TISSUE THICKNESS AROUND IMPLANTS



**Diagnose & assess the amount of the trabecular bone available using a CBCT** to evaluate the bone composition needed to perform a predictable plastic expansion. Flap the soft tissue using instruments and technique normally used.

Step 1:

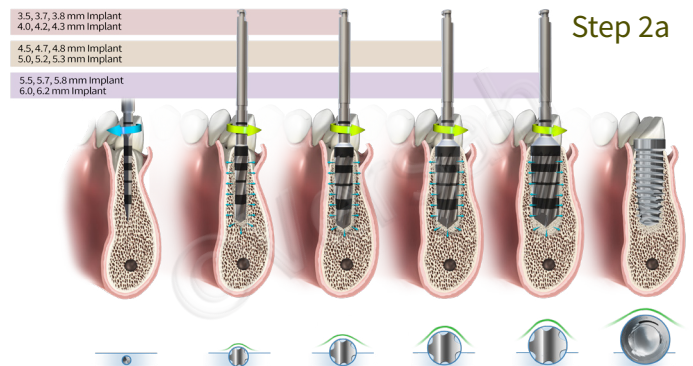
**Create intra-bony trough in narrow ridge  $< 4$  mm.** If the ridge contains  $\leq 2$  mm of trabecular-bone core or high cortical bone ratio, an intrabony ridge-split is needed; ridge-split to be made by a Piezosurgery 0.3 - 0.5 mm tip. Ridge-split is recommended to be as deep as the planned implant length. **No vertical side cuts are needed.** The ridge-split is to allow more buccal wall elasticity during the expansion procedure. **This intra-bony split is contra-indicated in resorbed ridge with a narrow base.**



Step 1

Step 2:

**Use the Densah® Bur in small increments,** depending upon the implant type and diameter. After a narrow pilot osteotomy, change the drill motor to Densifying Mode (counterclockwise, drill speed 800-1500 rpm with copious irrigation). Start with the narrowest Densah® Bur, in Densifying Mode, until reaching the desired depth (begin by introducing the running bur into the osteotomy. When feeling the haptic feedback of the bur pushing up out of the osteotomy, lift off and reapply pressure with a pumping motion until reaching the desired depth). As the bur diameter increases, the bone will slowly expand to the planned final diameter.



## Clinical Versatility of Osseodensification Create More with Less

Step 2 Continued...

The osteotomy may be expanded with minimal bone dehiscence, which may allow for total implant length placement in autogenous bone without thread exposure.

Step 3:

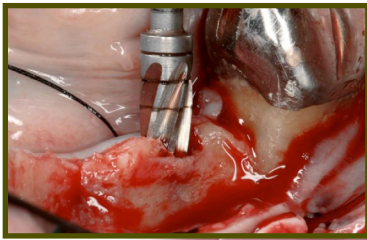
**Oversize the osteotomy to be slightly wider than the implant major diameter** (especially in the mandible) to prevent the implant threads from over-straining the expanded bony walls. **Mandibular osteotomies need to be planned and performed to 1mm deeper than the implant length.**

Step 4:

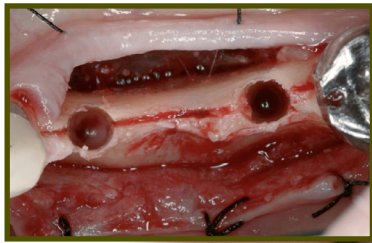
**Place an implant with a diameter that is equal or slightly larger than the initial ridge width.** If using the drill motor to tap the implant into place, the unit may stop when reaching the placement torque maximum. Finish placing the implant to depth manually with a torque indicating wrench.

Step 5:

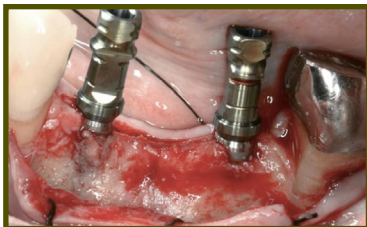
Perform **hard and soft tissue veneer contour-graft** to augment around the implant to develop tissue thickness that may enhance long term stability.



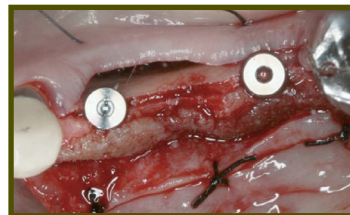
Step 2b



Step 3



Step 4



Step 5

